

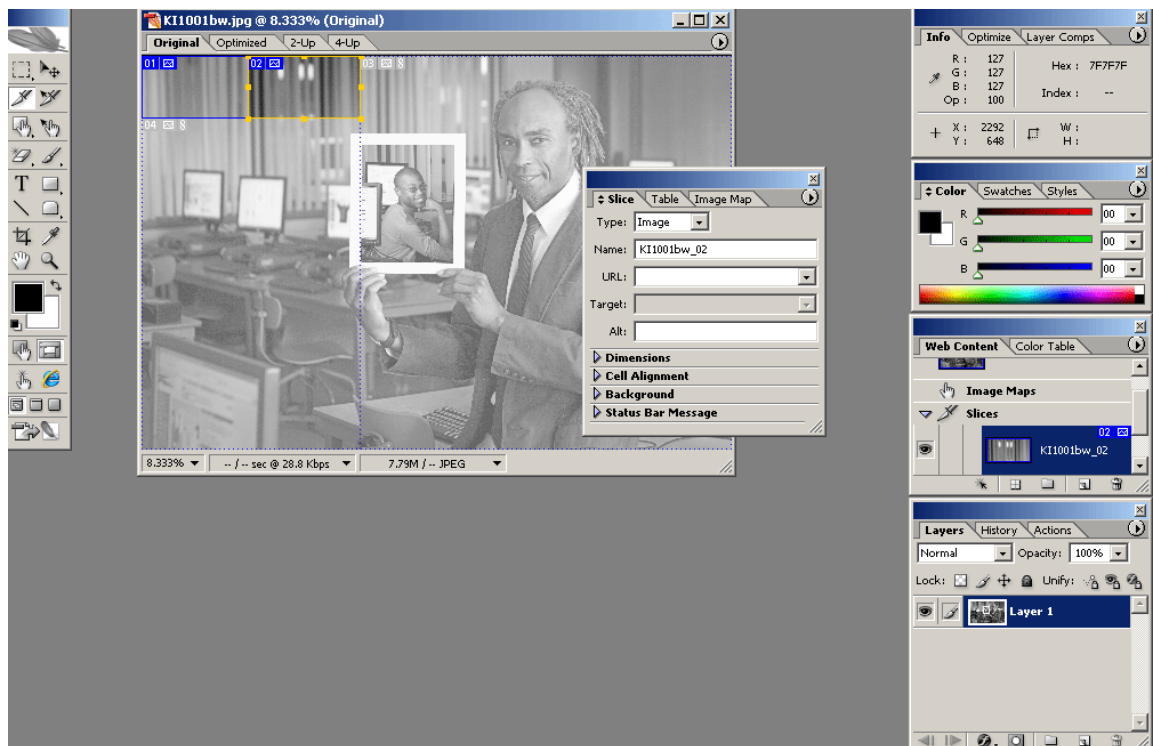
Creating Slices in Image Ready

A **sliced image** is actually a single image sliced or divided into multiple images. Each piece of the sliced image is called an **image slice**. Each image slice is an independent image file and can, therefore, have links, rollovers, and/or animations applied to it.

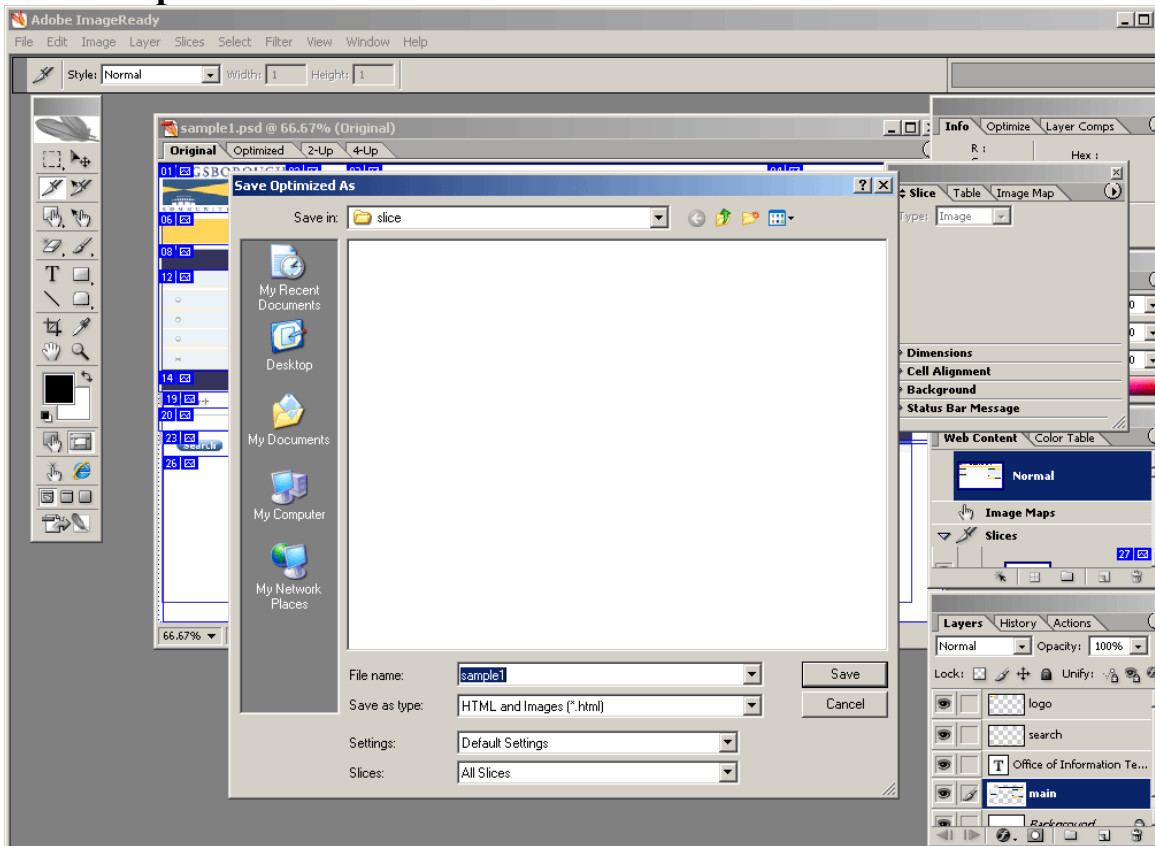
How is a sliced image different from an image map? An image map is *one* image with multiple hot spots, whereas a sliced image is actually broken into *two or more* individual images, which allows for more flexibility and the ability to animate and/or swap individual image slices without changing the entire image. Unlike image maps, each image slice in a sliced image can utilize a different optimization setting, allowing for better overall image optimization. However, don't get fooled by this; although image slices may optimize more efficiently, downloading a sliced image means that multiple images must be downloaded. This process can take as long or longer than downloading one large image map. As a general rule of thumb, do **not** slice an image into more slices than is absolutely required for the desired effect.

http://www.adobe.com/education/webtech/CS2/unit_graphics2/si_print.htm

1. **Open ImageReady.**
2. **Open the image to be sliced.**
3. **Select a portion of the image by using the Rectangular Marquee tool.**
4. **Slice image using Slice Tool**



5. Save optimized as...



File name: image name
Save as image: HTML and image
Settings: Default Setup
Slices: All Slices